

welcome to

RiTA

H O U S E

2  
0  
2  
4



Founders, Tash Rahbar and Scott Strumwasser, are husband and wife and practicing architects, who established Rita House in 2017.

It is named Rita House in the memory of Rita Riggs, an award winning Hollywood costume designer who utilized the building as her design studio in the 1960s while simultaneously sharing this historic space with people in the creative arts.

Originally built in 1926 as a Prop Design Studio for film and television, Tash and Scott's mission is to carry on the Rita House legacy by supporting creative minds in a nurturing and comfortable environment.





# The First Floor

**3 hour minimum: \$300/hr**

**Half-day (6 hr): \$1500**

**Full Day (12 hr): \$3500**

**Includes the Parlor, Mezzanine, Library, and Kitchen**

**Management and cleaning fee:**

**\$200 half-day**

**\$400 full day**

# Parlor + Library

**3 hour minimum: \$200/ hr**

**Half-day (6 hr): \$1000**

**Full Day (12 hr): \$2200**

**Ideal for smaller shoots who need to film in either place, and need a second space for crew/equipment/crafty.**

**Management and cleaning fee:**

**\$200 half-day**

**\$400 full day**



# Conference Room + Brick Room

*Available on weekends only, or need to reserve 2 weeks in  
advance*

**3 hour minimum: \$200/hr**

**Half-day (6 hr): \$1000**

**Full Day (12 hr): \$2200**

**Management and cleaning fee:**

**\$200 half-day**

**\$400 full day**





# The Loft

**4 hour minimum: \$350/hr**

**Half-day (6 hr): \$1900**

**Full Day (12 hr): \$3700**

**Includes a kitchen, living room, 1 bedroom, and a patio.**

**Management and cleaning fee:**

**\$200 half-day**

**\$400 full day**

# Load-in & Load-out

Load in and Load out can happen through the front door, and for larger needs we do have a garage you can pull up to in the alley between 3rd and 2nd street.

An elevator can be made available upon request to transport equipment from the 1st to 3rd floor.

***The elevator can only be operated by Rita House personnel.***

The elevator is for equipment transport only, cast and crew need to use the stairs if they are able.

Load in and load out is a part of your rental time, we suggest reserving an extra hour on the beginning and end of filming, but each situation is unique.

# After hours & Cancellation

## Normal operating hours 8am-10pm

Early entry fee before 8am: \$50 extra an hour

Late closing fee after 10pm: \$75 extra an hour

Last minute changes admin fee \$150

- changing your reservation with less than 48 hours notice

## **Cancellation:**

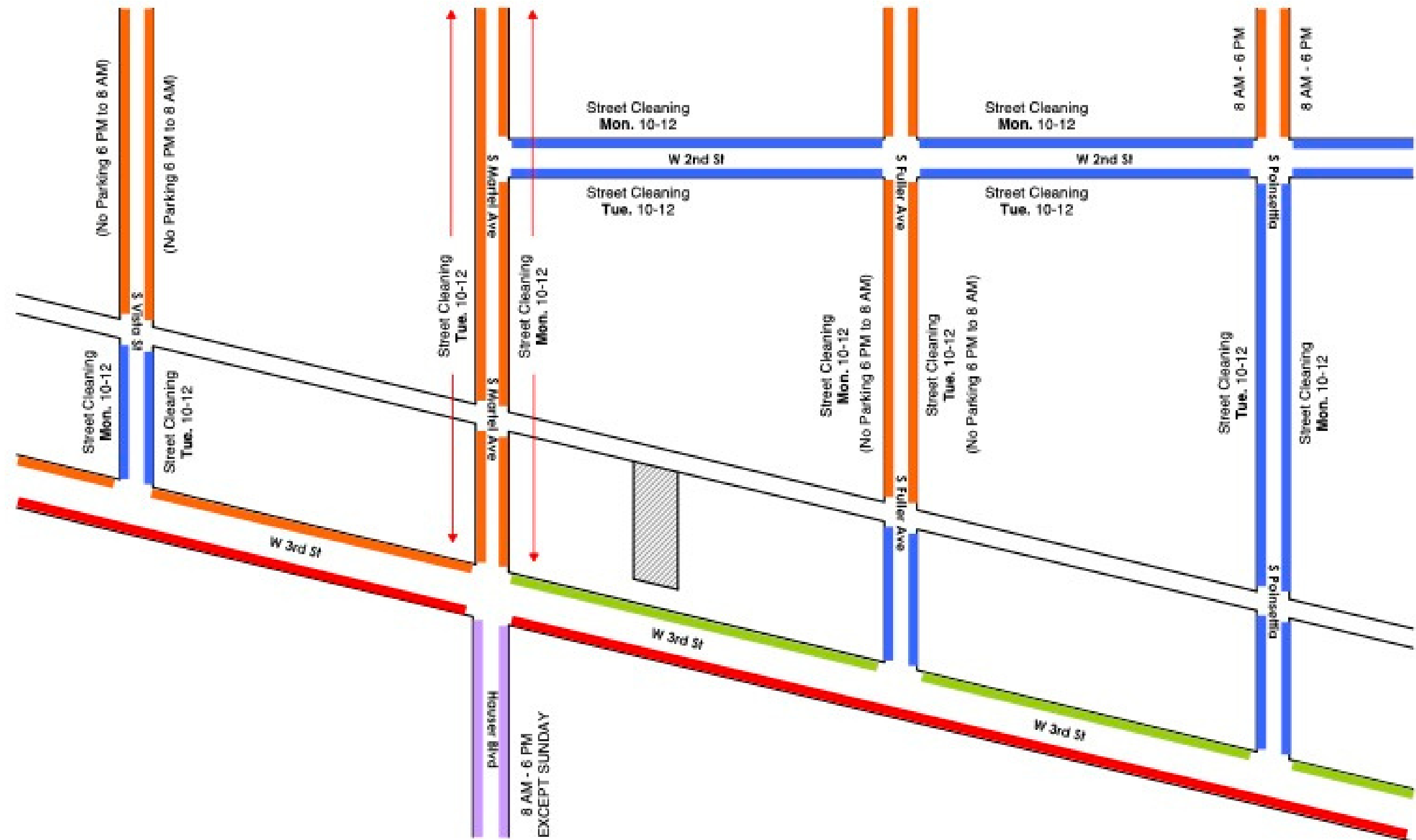
1 week notice = full refund

6 days-48 hours notice = 75% refund

Less than 48 hours notice = 50% refund



# Parking



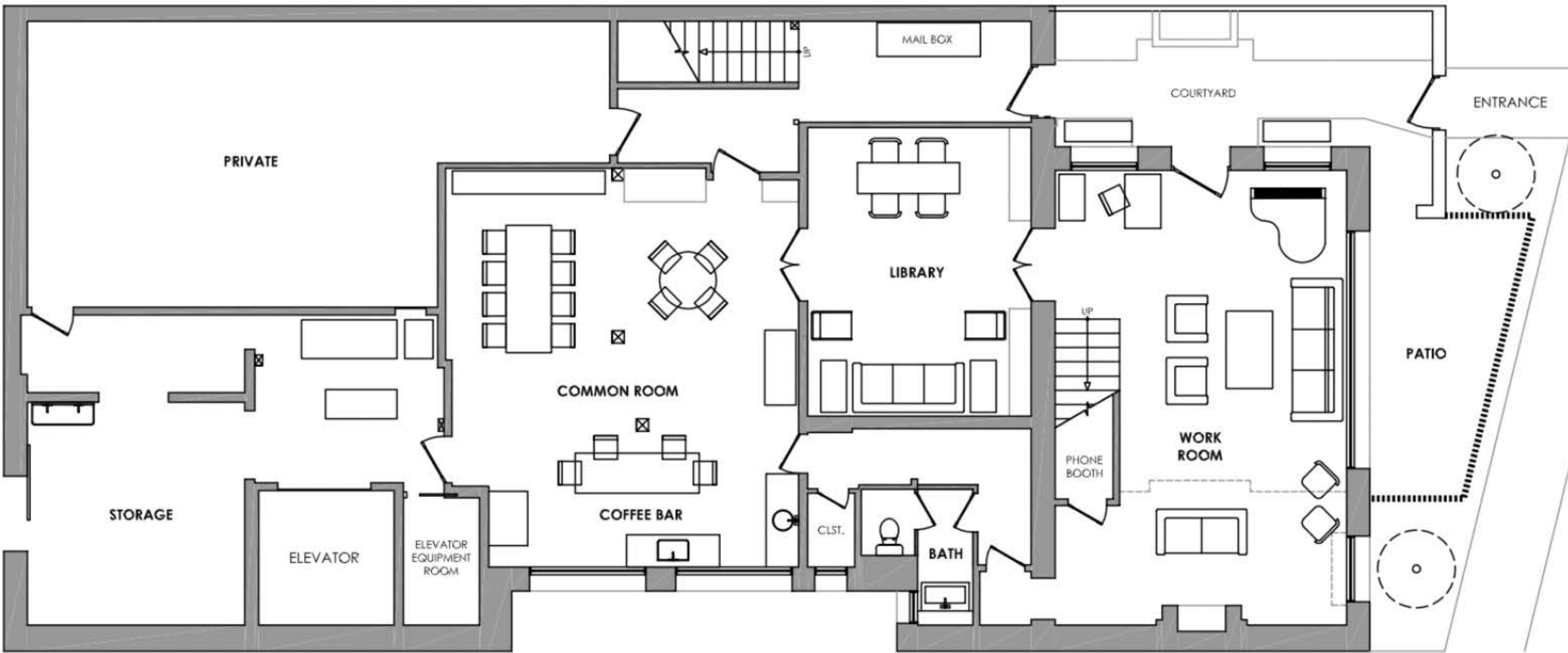
## LEGEND:


- █ NO PARKING
- █ NO LIMIT PARKING
- █ NO LIMIT PARKING (STREET CLEANING MON. & TUE.)
- █ 2 HOUR PARKING
- █ 4 HOUR PARKING

## NOTE:

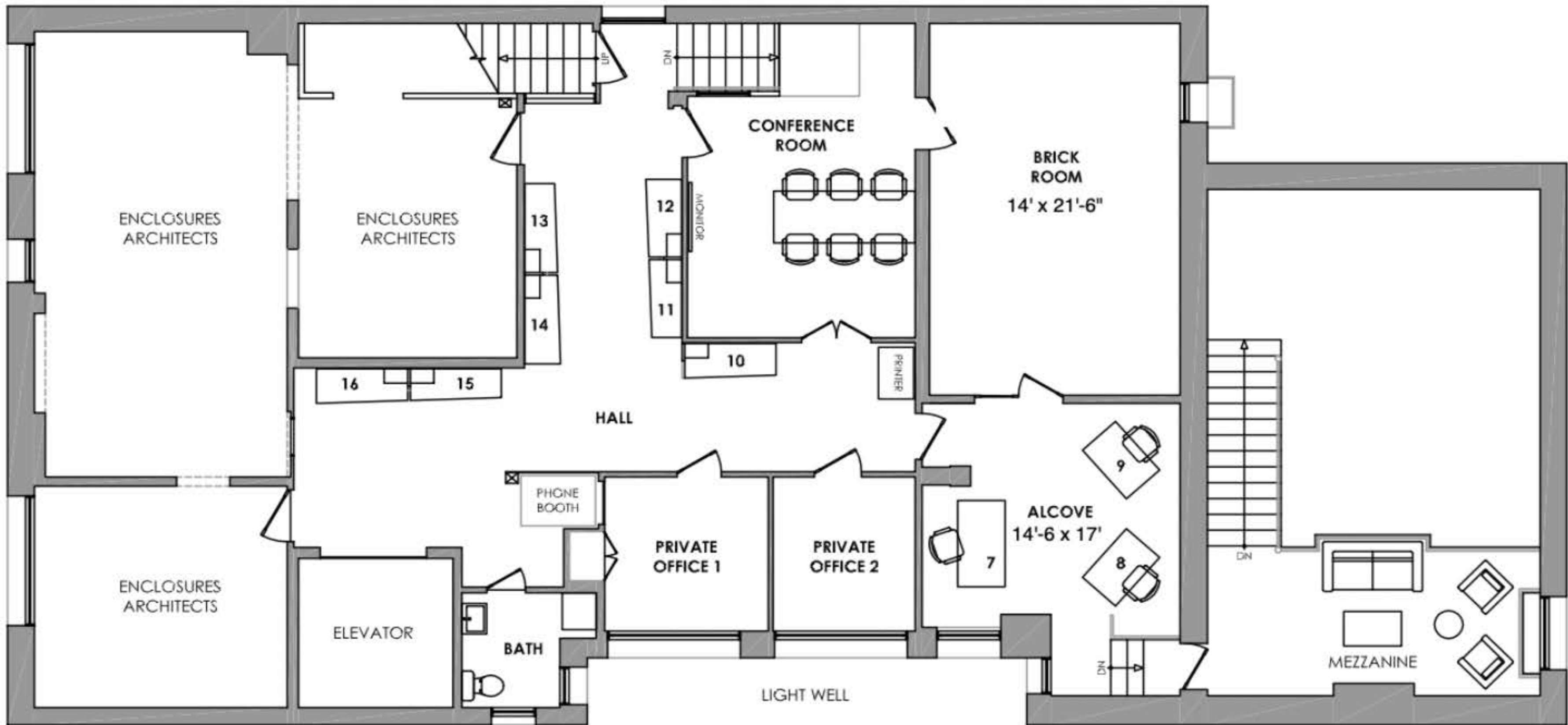
- RITA HOUSE IS NOT RESPONSIBLE FOR YOUR PARKING CITATION.
- PARKING IS ALSO AVAILABLE AT THE GROVE (3 BLOCKS WEST OF US).





 [Access 3D tour here](#)

**RITA HOUSE**  
1st FLOOR PLAN



Access 3D tour here

# FAQ

## Can we move the furniture?

Absolutely, we just ask that you discuss specifics with us in advance and make sure furniture is returned to its original spot as a part of load out.

## Can we move the art? / Art permissions?

You can remove the art, please discuss with us in advance as we may have our staff remove it. We can put you in contact with the artist if you'd like to use it and need permission.

## Insurance?

You do need insurance to film with us, please send a copy of your COI to [hello@ritahouse.com](mailto:hello@ritahouse.com). For smaller productions, booking through Peerspace is possible.

## Crew size capacity?

We ask you keep your crew size to around 15, it is hard for us to accomodate more than 25. For high impact shoots rates increase. Please contact us directly to discuss if you have a large team.

## Noise?

Outside noise varies room to room at Rita House, the Parlor being closest to the street. We get the occasional siren. The Loft is the most isolated location in terms of noise.



# FAQ

## Is there Roof access?

Yes, and you can shoot on the roof if needed. Please reach out directly for more info.

## Can you work with micro-budgets?

Yes we've worked with smaller productions before, please reach out to us with the budget you have in mind and we will see what is possible.

## Are you ADA compliant?

Rita House is nearly 100 years old, being built in the 1920s, so we're unable to meet all of the ADA regulations while maintaining the historic integrity of the building. Please reach out to us directly to discuss how we can accommodate your needs.

## Quick shoot?

Shorter shoots are considered on case by case basis depending on amount of people and # of pages.

## Hair & Makeup space?

We have many spaces available for Hair/Makeup/Wardrobe if needed. This is why we suggest booking an adjacent room to your filming space.

