

RITA HOUSE OUR SPACES

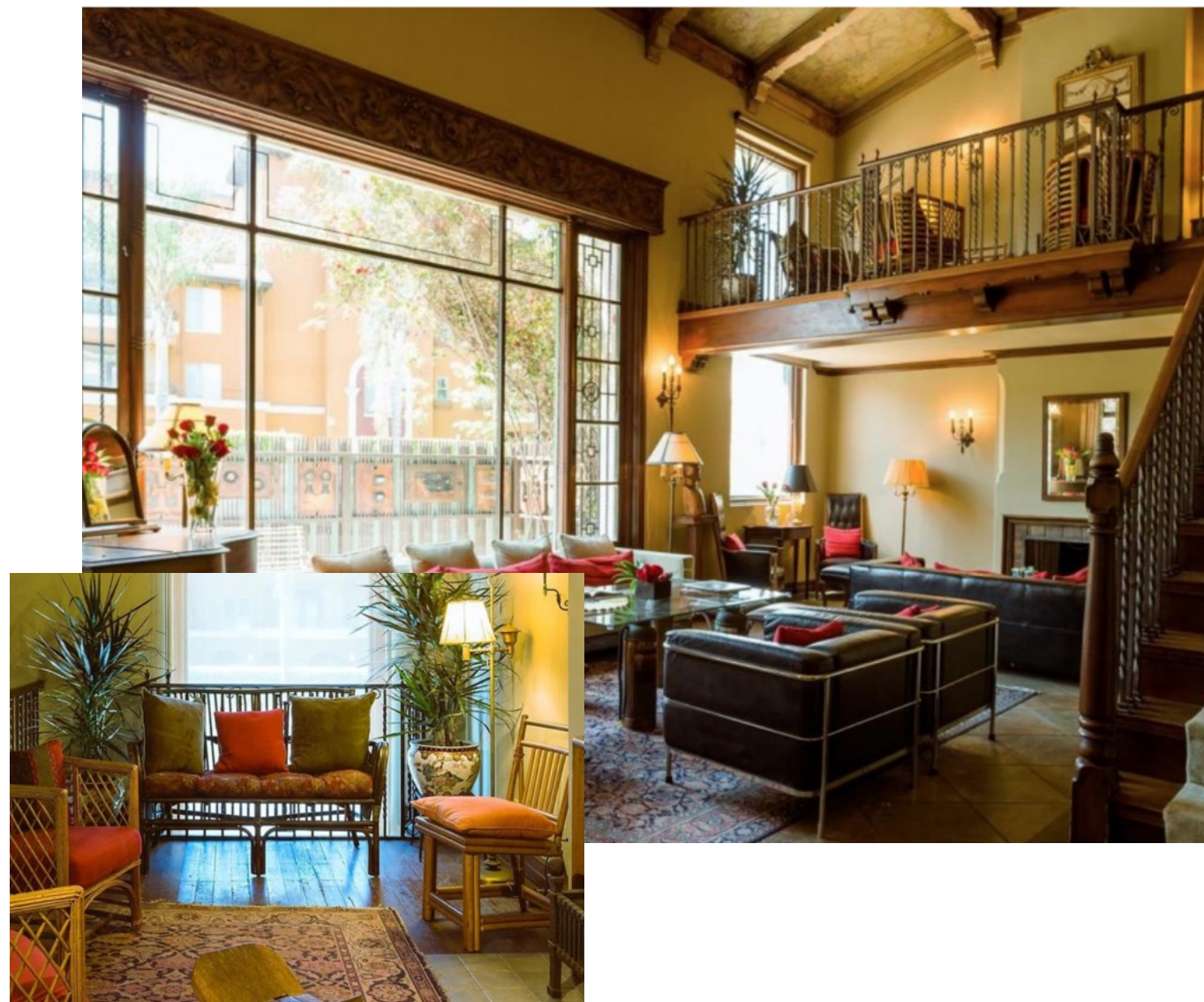
THE PARLOR
THE LIBRARY
THE LOFT



THE CONFERENCE ROOM
THE KITCHEN
THE BRICK ROOM

THE FIRST FLOOR

INCLUDES: PARLOR, MEZZANINE, LIBRARY, KITCHEN



3 HOUR MINIMUM: \$300/HR · HALF-DAY (6 HRS): \$1500 · FULL DAY (12 HRS): \$3500

MANAGEMENT AND CLEANING FEE: \$200 HALF DAY · \$400 FULL DAY

IDEAL FOR SMALLER SHOOTS NEEDING SEPARATE FILMING AND CREW SPACES.



3 HOUR MINIMUM: \$200/HR · HALF-DAY (6 HRS): \$1000 · FULL DAY (12 HRS): \$2200

MANAGEMENT AND CLEANING FEE: \$200 HALF DAY · \$400 FULL DAY

CONFERENCE ROOM + BRICK ROOM



3 HOUR MINIMUM: \$200/HR · HALF-DAY (6 HRS): \$1000 · FULL DAY (12 HRS): \$2200

MANAGEMENT AND CLEANING FEE: \$200 HALF DAY · \$400 FULL DAY

INCLUDES KITCHEN, LIVING ROOM, BEDROOM, AND PATIO



4 HOUR MINIMUM: \$350/HR · HALF-DAY (6 HRS): \$1900 · FULL DAY (12 HRS): \$3700

MANAGEMENT AND CLEANING FEE: \$200 HALF DAY · \$400 FULL DAY

LOADING

Loading in and out can be done via the front door. For larger needs, we also offer garage access from the alley between 3rd and 2nd Streets. An elevator, operated by Rita House staff and available upon request, can transport equipment between the 1st and 3rd floors. Please note, the elevator is for equipment only; cast and crew should use the stairs if possible.

Loading in/out is included in your rental time. We recommend reserving an extra hour at the beginning and end of your session, though timing may vary based on your needs.

AFTER HOURS / CANCELLATION

Normal operating hours 8am-10pm

Early entry fee before 8am: \$50 extra an hour

Late closing fee after 10pm: \$75 extra an hour

Last minute changes admin fee \$150

- changing your reservation with less than 48 hours notice

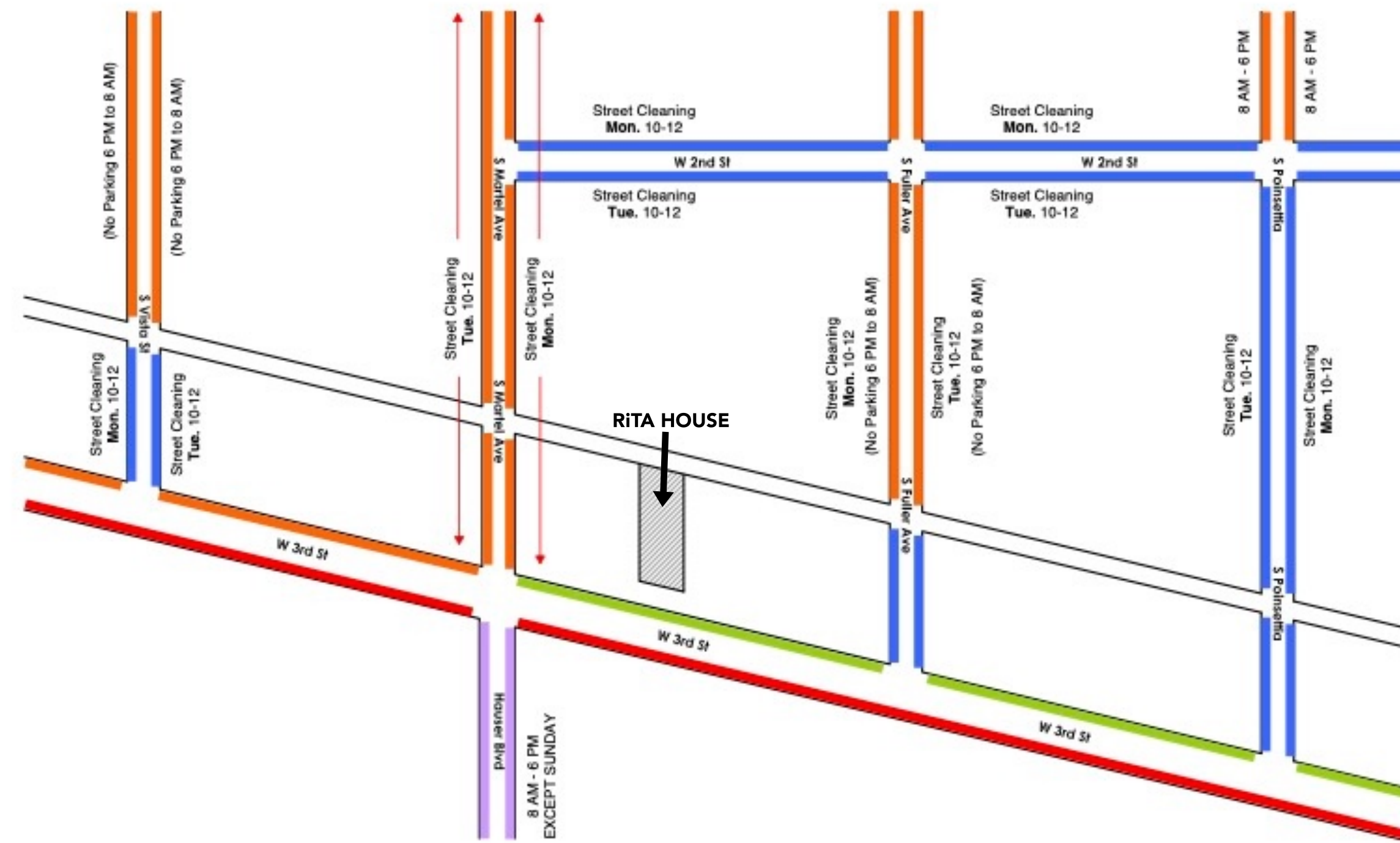
Cancellation:

1 week notice = full refund

6 days-48 hours notice = 75% refund

Less than 48 hours notice = 50% refund

PARKING



LEGEND:

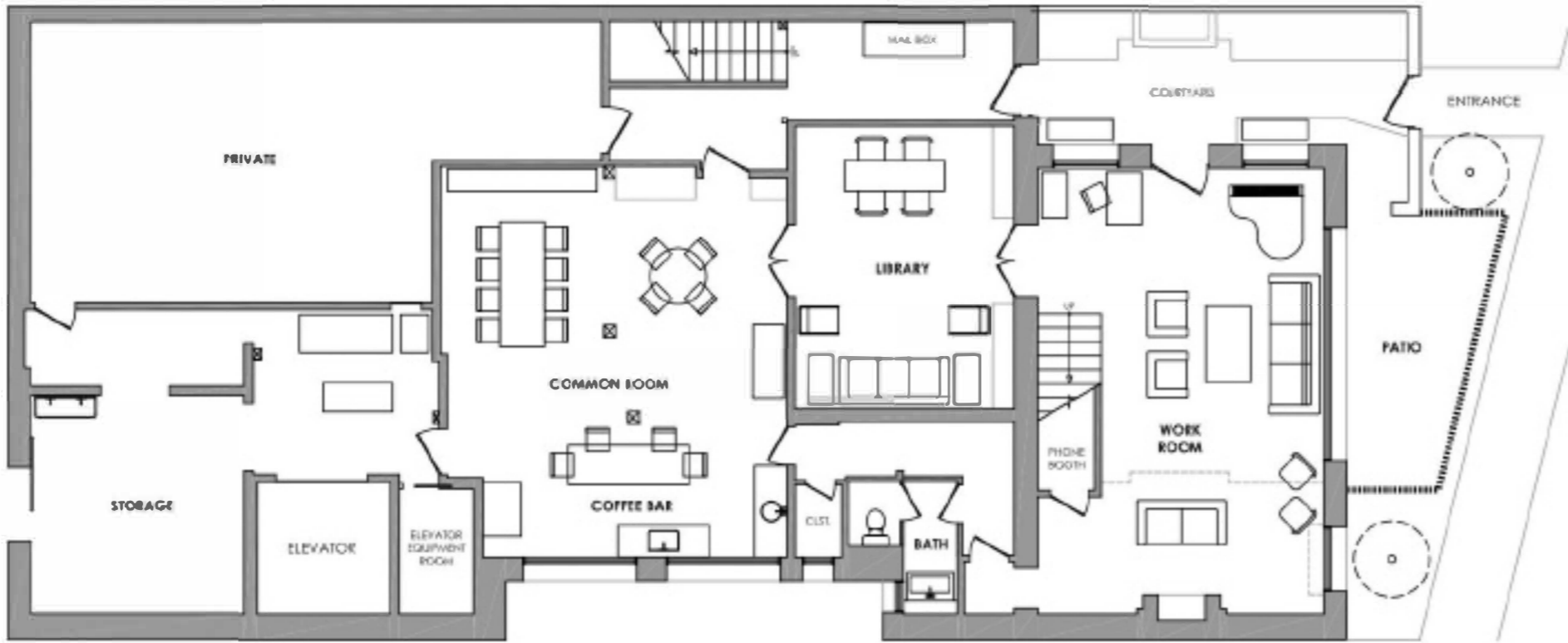
- █ NO PARKING
- █ NO LIMIT PARKING
- █ NO LIMIT PARKING (STREET CLEANING MON. & TUE.)
- █ 2 HOUR PARKING
- █ 4 HOUR PARKING

NOTE:

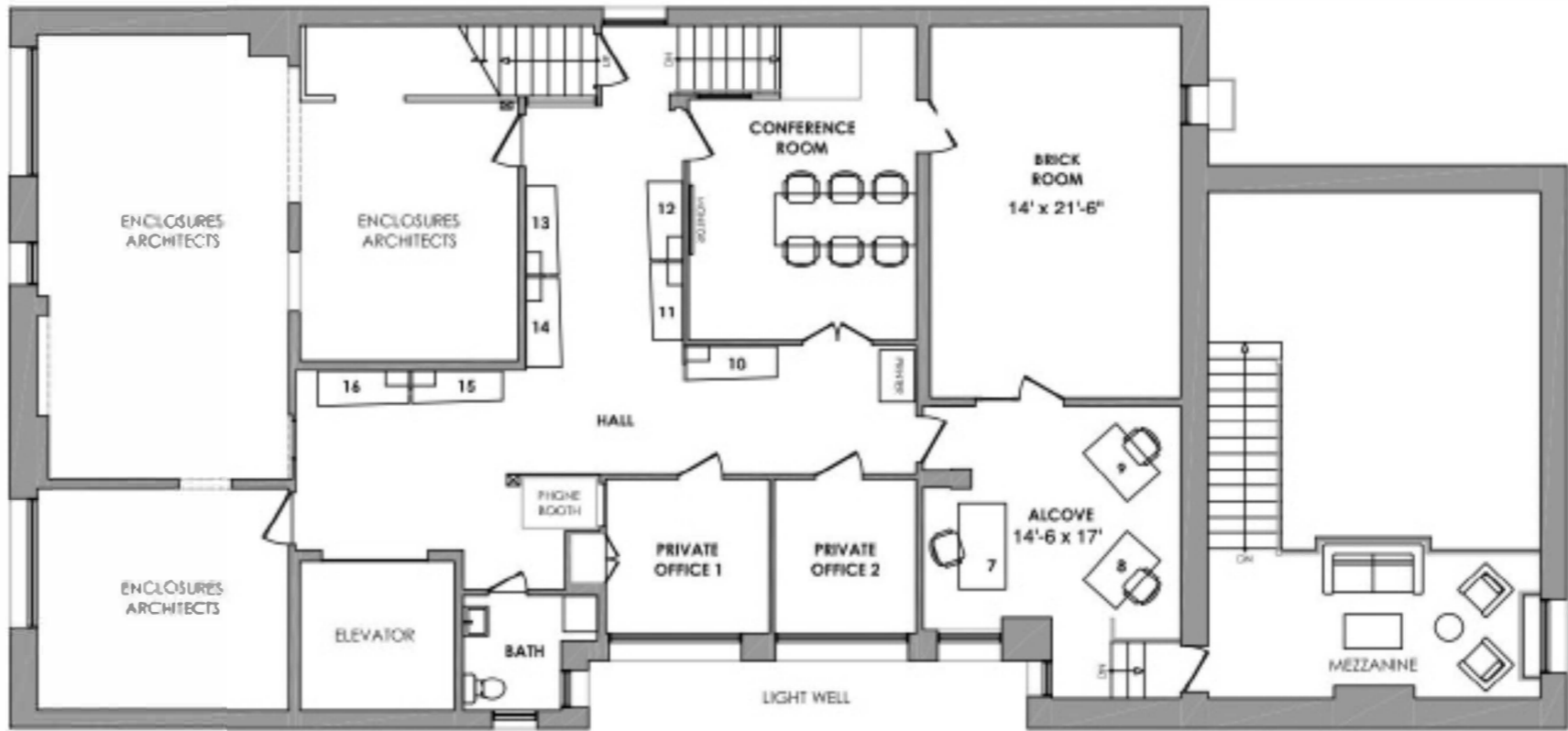
- RITA HOUSE IS NOT RESPONSIBLE FOR YOUR PARKING CITATION.
- PARKING IS ALSO AVAILABLE AT THE GROVE (3 BLOCKS WEST OF US).



FLOOR PLANS



FIRST FLOOR PLAN



SECOND FLOOR PLAN

3D TOUR AVAILABLE [HERE](#)

F A Q

FURNITURE: Furniture can be moved, but please coordinate with us beforehand and return it to its original spot during load-out.

ART: Art can be removed with prior approval. We may have staff assist, and we can connect you with the artist if you need permissions.

INSURANCE: Insurance is required; please send your COI to hello@ritahouse.com. Small productions may book through Peerspace for insurance.

CREW CAPACITY: Ideal crew size is around 15; we can accommodate up to 25. For larger crews or high-impact shoots, please contact us to discuss rates.

NOISE: Room noise varies. The Parlor is nearest to the street with occasional sirens, while The Loft is quieter.

ROOF ACCESS: Roof access is available. Contact us for details.

MICRO-BUDGETS AND QUICK SHOTS: We can work with smaller budgets; reach out with your budget details to explore options. Shorter shoots are considered case-by-case based on crew size and script length.

HAIR AND MAKEUP: We offer multiple spaces for hair, makeup, and wardrobe. Booking an adjacent room is recommended for these needs.

ADA COMPLIANCE: Rita House, built in the 1920s, isn't fully ADA-compliant. Contact us to discuss specific accommodations.

HISTORY OF

RiTA HOUSE



RITA RIGGS

RITA HOUSE WAS FOUNDED in 2017 by Tash Rahbar and Scott Strumwasser, a husband-and-wife team who are both practicing architects. The establishment is a tribute to Rita Riggs, an acclaimed Hollywood costume designer who worked closely with iconic figures like Norman Lear and Alfred Hitchcock.

Riggs once utilized this historic space as her design studio, leaving a legacy of creativity and collaboration that is deeply ingrained in the ethos of Rita House. Tash and Scott are committed to honoring her memory by fostering a nurturing and inspiring environment for creative professionals. The founders' mission is to continue the tradition of supporting and empowering creative minds within this unique and historical setting.